

Wind Turbine Tower Internals, Laser Machining and Prefabricated Services



LPR GLOBAL

344 Bloor Street W, Suite 607, Toronto, ON Canada M5S 3A7

www.lprglobal.com | www.uskoreahotlink.com

Tel.: +1 416-423-5590

E-Mail: info@lprglobal.com

Contents	Page
Company Overview	3
Facilities and Process	4
Products	5
Equipment List and Capabilities	6
Patents and Certifications	8
Quality Control Measures	10
Client List and Past Projects	11



Company Overview

This branch of LPR Global was founded in 2000 as a fabricator and manufacturer of components for power generation facilities, industrial machinery, wind turbine internals, and other industries requiring precision-machined parts. LPR Global is ISO 9001:2015 certified for quality control, with the head fabrication site located in Daegu, South Korea; we also possesses a facility in Ansan, South Korea, as well as an additional production plant in Daegu. The core competencies of LPR Global are the production of components such as wind turbine platforms, ladders, and doorways, as well as baffle plates, end plates, and HRSG drums for HRSG plants or parts for any industry requiring machined parts.

Core Business Areas

Over the years, LPR Global has served clients in a variety of industries, including Renewable Energy, Heavy Industry, and Power Generation. Our clients include General Electric Power, Enercon, IHI and BHI. Please view the projects and clients page to learn more.

Wind Power	HRSG System	Custom Manufacturing
<ul style="list-style-type: none">• Custom Platforms• Ladders• Stairways• Hatches• Internal Kits	<ul style="list-style-type: none">• Baffle Plates• End Plates• Lug Plates• HRSG Drums• Stator Cores	<ul style="list-style-type: none">• Laser machining• Prefabricated modular buildings• Frames for equipment• Belt and lift conveyors• Mezzanine decks

LPR Global Laser Machining and Fabrication Primary Site (Daegu, South Korea)



LPR Daegu Headquarters, 2664 m² building footage

Facilities and Process

Facilities Overview

LPR Global has three separate manufacturing facilities, totalling 39 900 m² of space for production and warehousing. To produce components, we use four separate lines with dedicated roles to ensure that quality and efficiency during the fabrication process are maximized.

Process Overview



Line A: Processing Line, Laser, Press, Cutting



Line B: Steel Pipe Welding, Large Laser Machining



Line C: Welding Line



Line D: Assembly and Shipment

Facilities and Process

Facilities Overview

Furthermore, LPR Global has extensive painting facilities to ensure a quality finish.

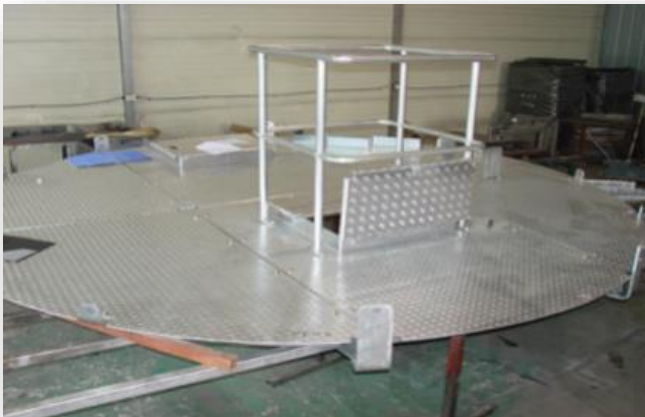


Products

Products

LPR Global offers machined components for a range of industries, including Wind Tower Turbine Internals and parts for HRSG Plants.

Wind Turbine Internals



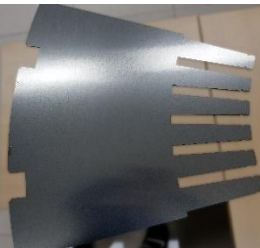
LPR Global can provide various wind turbine internals such as platform components (top and bottom left), platform assemblies (top right), and custom ladders.



HRSG and Power Plant Components



Power Plant Manifold



Stator Core Components



Tube Sheet



HRSG Drum Separator

Equipment List and Capabilities

Laser Machining Centers

TruLaser Series, by Trumpf



Cutting Capacity	Model	Laser Power	Working Range
Steel: 20 - 22T Stn. less: 16 - 20T Alum.: 10 - 16T	TruLaser 3040	6 kW	2000W x 4000L
	TruLaser 3060	10 kW	2500W x 6000L
	TruLaser 5060	6 kW	2000W x 6000L

Bystar, by Bystronic



Cutting Capacity	Model	Laser Power	Working Range
Steel: 20T, Stainless: 16T, Aluminum: 10T	BY 3015	4.4 kW	1524W x 3048L
	By 4025	4.4 kW	2500W x 4000L

Tanaka Laser Machining, by Tanaka



Cutting Capacity	Model	Laser Power	Working Range
Steel: 22T, Stainless: 20T, Aluminum: 16T	LMX VII	6 kW	3000W x 15000L
	LMR V	6 kW	3000W x 16000L

Bystar Fiber Machining, by Bystronic



Cutting Capacity	Model	Laser Power	Working Range
Steel: 25T, Stainless: 30T, Aluminum 25T	Bystar Fiber 4020	10 kW	2000W x 4000L

TruLaser Pipe Machining, by Trumpf



Model	Laser Power	Working Range
Tube 7000	3.6 kW	Ø250 x 6000L

Equipment List and Capabilities

In addition to laser machining, we provide conventional fabrication services. These capabilities are outlined below.

Bending Machines

- NCB1260 (Gook Do, South Korea)
 - 750 Ton, 12T x 6000L
 - 450 Ton, 16T x 4000L
 - 150 Ton, 6T x 3000L
- HS1303 (Amada, Japan)
 - 130 Ton, 4.5T x 3000L
- TRUMF 5170 (Trumf, Germany)
 - 170 Ton, 6T x 3050L

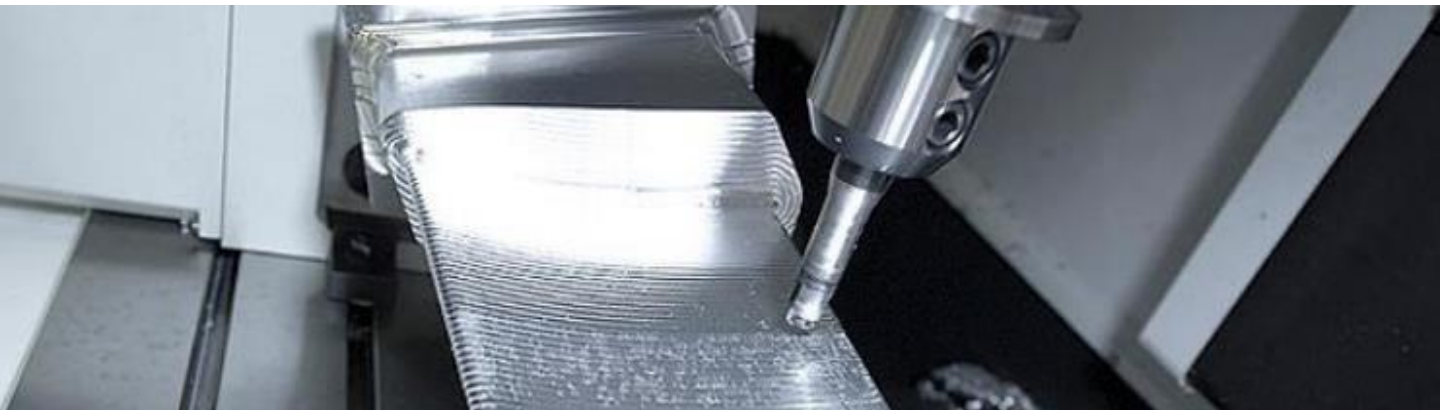
CNC Milling Machines

- MCT VX950, 600 x 2400 x 700
- MCT KV60, 600 x 1100 x 600
 - 130 Ton, 4.5T x 3000L
- Milling Machines
 - 200 x 700
 - 1000 x 3000 x 700

Welding

Hot Dip Galvanizing Finishing

Painting



Patents and Certifications

Certifications

- ISO9001:2015 certified for Quality Management Systems
- ISO:1461 for Hot Dip Galvanized Coatings on Iron and Steel
- Daegu Provincial Star Exporter, 2021 – 2023
- Ministry of SMES and Startups (South Korea) Innovative Business Certification, 2021 – 2024
- IHI Certified Supplier, 2018 - 2023

Patents

- Patent on Bidirectional Flow Device
- Patent on Multi-Axis Synchronization Device
- Patent on Radio Frequency Recognition with Piezometric Device
- Patent on Rotation Energy Generator
- Patent on Thrust Generator for Flowing Body



Certificate of Patent for Bidirectional Flow Device from the Korean Intellectual Property Office

위의 발명은 「특허법」에 따라 특허등록원부에 등록되었음을 증명합니다.
This is to certify that, in accordance with the Patent Act, a patent for the invention has been registered at the Korean Intellectual Property Office.



2015년 10월 26일

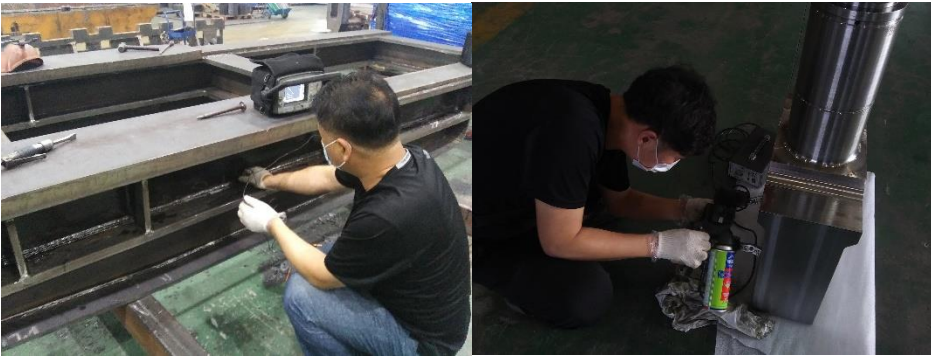
특허청장
COMMISSIONER,
KOREAN INTELLECTUAL PROPERTY OFFICE

최 동 규

Quality Control Measures

Testing Methods to Guarantee Quality

LPR Global has several non-destructive testing measures to ensure that all end products meet our quality standards. These methods include ultrasonic testing for flaws, penetrate inspection to check for surface-breaking defects, and magnetic particle inspection to detect discontinuities in metals.



***Ultrasonic
Testing***

***Penetrate
Inspection/
Penetrant
Testing***



***Magnetic
Particle
Inspection***

Client List & Past Projects



GE Power



acciona



UNISON



Hanwha



POSCO

DAELIM



GS



동국S&C

Past Wind Turbine Projects

Client	Project
Trinity-GE	1.6 MW, 80 m blade dia. (Clinton)
Trinity-GE	1.6 MW, 80 m blade dia. (Newton)
Trinity-GE	1.6 MW, 80 m blade dia. (West Fargo)
Trinity-GE	1.6 MW, 80 m blade dia. (Tulsa)
UNISON	2 MW, WTG
UNISON & Nordex	Nordex USA 40 MW Project
UNISON & Acciona	Acciona San Roman Tower Internals
UNISON & Acciona	Acciona Building Energy Tower Internal
UNISON & Enercon	Enercon E82 Tower Internals
UNISON & Enercon	Enercon E92 Tower Internals

Notable Power Generation Projects

Industry	Client	Project Date	Component
Power Generation	GE Power	2016 – Present	HRSG Part
	Doosan Construction	2013 – 2016	HRSG Part
	Doosan Engineering	2004 – Present	HRSG Part
	IHI	2007 – Present	Boiler for HRSG Plant
	BHI	2007 – Present	HRSG Part
	DKME	2017 – Present	HRSG Part, Chem.
	Hyundai Heavy Industries	2014 – 2016	HRSG Casing
	Daelim	2014 – 2015	HRSG Casing
	GS Entec	2012 – Present	HRSG Part

Other Projects

Other Notable Projects

Industry	Client	Project Date	Component
Factory Automation	Hanhwa Machine	2019 – Present	Distribution
	Hyundai Movex	2017 – Present	Conveyor Assembly
	SFA	2017 – Present	Automation Frame Parts
	YJ Link	2009 – Present	Automation Equip. Parts
	Eunil	2009 – Present	Automation Equip. Parts
	Hyundai Rotem	2019 – Present	FA Industry Machine
Industrial Machinery	Mitsubishi Heavy Industry	2016 – Present	Transpo. Ntwk. Parts
	Posco Construction	2012 – Present	Steel Equip. Parts
	Sinhyeon Industry	2013 – Present	Heavy Equip. Parts
	Jeongdo Industry	2007 – Present	Heavy Equip. Parts
Car Parking Facility	Hyundai Elevator	2017 – Present	Car Parking Tower Ass'y
	Dongyang Menics	2015 – 2017	Car Parking Tower Ass'y
ETC.	SMEC	2016 – Present	Machine & FA Parts
	KPC	2008 – Present	Industrial Valve Parts
	Jinshan Industrial	2000 – Present	Shredder Parts

LPR GLOBAL



LPR Global, Inc.

344 Bloor Street W, Suite #607 Toronto, ON M5S 3A7 Canada

www.lprglobal.com | www.uskoreahotlink.com

Tel: +1 416-423-5590

E-Mail: info@lprglobal.com

