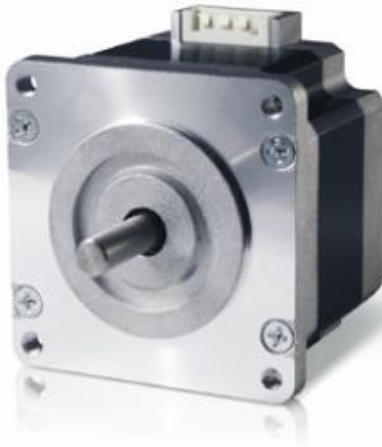


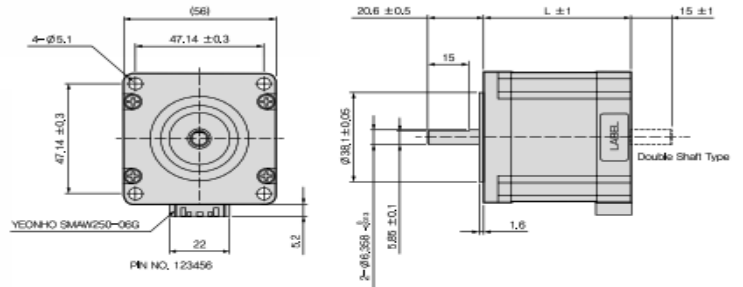


# 1.8° Hybrid Stepper Motors

## 56Q Series | NEMA 23 (56 mm)



Dimension Specification



Wiring Diagram



### SPECIFICATIONS

U n i p o l a r	Model No.	Holding Torque (N · cm)	Motor Length (L=mm)	Rotor Inertia (g · cm <sup>2</sup> )	Rated Voltage (V/Phase)	Rated Current (A/Phase)	Winding Resistance (Ω/Phase)	Inductance (mH/Phase)
	4S56Q-P12042S	39.23	42.5	90	12.0	0.4	30.0	32.0
	4S56Q-P05042S	39.23	42.5	90	5.0	1.0	5.0	6.9
	4S56Q-P02642S	39.23	42.5	90	2.6	2.0	1.3	1.9
	4S56Q-P01842S	39.23	42.5	90	1.8	3.0	0.65	0.9
	4S56Q-P12054S	78.45	54.5	230	12.0	0.6	20.0	38.0
	4S56Q-P08254S	78.45	54.5	230	8.2	1.0	8.2	14.0
	4S56Q-P04054S	78.45	54.5	230	4.0	2.0	2.0	4.2
	4S56Q-P02554S	78.45	54.5	230	2.5	3.0	0.85	1.7
	4S56Q-P08576S	132.39	76.5	370	8.5	1.0	8.5	18.0
4S56Q-P04576S	132.39	76.5	370	4.5	2.0	2.3	4.3	
4S56Q-P03076S	132.39	76.5	370	3.0	3.0	1.0	1.7	

B i p o l a r	Model No.	Holding Torque (N · cm)	Motor Length (L=mm)	Rotor Inertia (g · cm <sup>2</sup> )	Rated Voltage (V/Phase)	Rated Current (A/Phase)	Winding Resistance (Ω/Phase)	Inductance (mH/Phase)
	2S56Q-P09042S	54.92	42.5	90	9.0	0.6	15.0	32.0
	2S56Q-P03542S	54.92	42.5	90	3.5	1.4	2.5	6.9
	2S56Q-P01842S	54.92	42.5	90	1.8	2.8	0.65	1.9
	2S56Q-P08054S	109.83	54.5	230	8.0	0.8	10.0	38.0
	2S56Q-P05754S	109.83	54.5	230	5.7	1.4	4.1	14.0
	2S56Q-P02854S	109.83	54.5	230	2.8	2.8	1.0	4.2
	2S56Q-P06076S	185.35	76.5	370	6.0	1.4	4.3	18.0
	2S56Q-P03476S	185.35	76.5	370	3.4	2.8	1.2	4.3



# 1.8° Hybrid Stepper Motors Performance Data

## 56Q Series | NEMA 23 (56 mm)

### Torque/Speed Curve

- DRIVER CHOPPER
- SUPPLY VOLTAGE: DC 24.0V
- 2 PHASE EXCITING
- MOUNTING WITH RUBBER DAMPER

