

Micro-finishing Solutions for Automotive Parts

- Crank Lapping Machine

Crank Lapping Machine

◆ Crank Lapping Machine

- ✓ Work : Crank shaft
- ✓ Machining Detail : Lapping for journals, pins, oil seal and thrust part
- ✓ Cycle Time : 60 sec.
- ✓ Weight : 6 tons

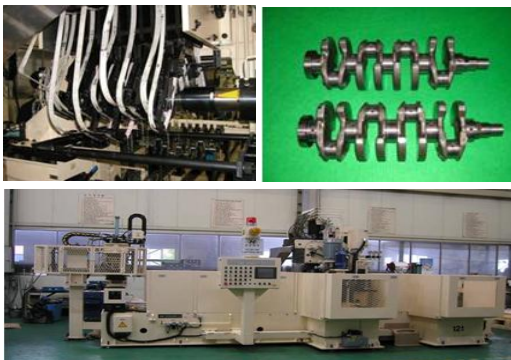
Equipment Image



◆ Crank Lapping Machine

- ✓ Work : Crank shaft
- ✓ Machining Detail : Lapping for journals, pins and oil seal
- ✓ Cycle Time : 52 sec.
- ✓ Weight : 7 tons

Equipment Image



◆ Crank Lapping Machine

- ✓ Work : Crank shaft
- ✓ Machining Detail : Lapping for journals, pins and oil seal
- ✓ Cycle Time : 42 sec.
- ✓ Weight : 15 tons

Equipment Image



◆ Crank Lapping Machine

- ✓ Work : Crank shaft
- ✓ Machining Detail : Lapping for journals, pins and oil seal
- ✓ Cycle Time : 45 sec.
- ✓ Weight : 7 tons

Equipment Image



Micro-finishing Solutions for Automotive Parts

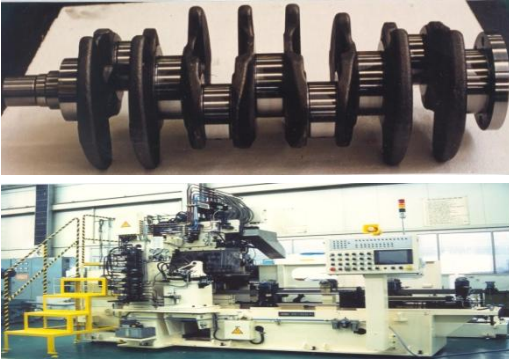
- Crank Lapping Machine

Crank Lapping Machine

◆ Crank Lapping Machine

- ✓ Work : Crank shaft
- ✓ Machining Detail : Lapping for journals, pins and oil seal
- ✓ Cycle Time : 50 sec.
- ✓ Weight : 6 tons

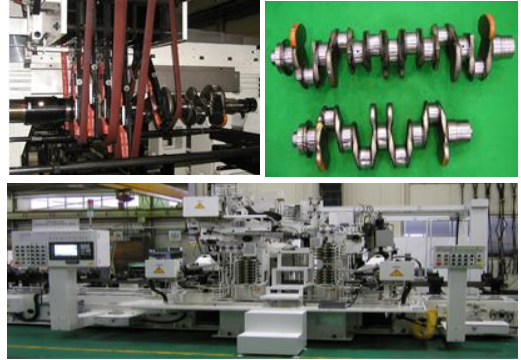
Equipment Image



◆ Crank Lapping Machine

- ✓ Work : Crank shaft
- ✓ Machining Detail : Lapping for journals, pins, oil seal and thrust face
- ✓ Cycle Time : 3.4 min.
- ✓ Weight : 9 tons

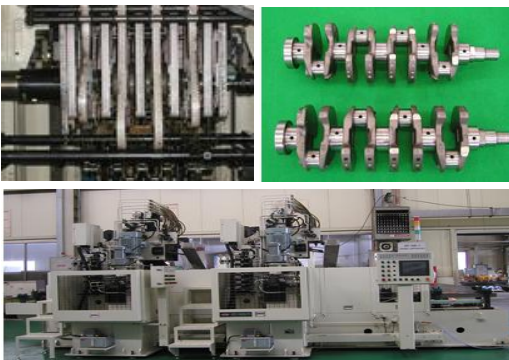
Equipment Image



◆ Crank Lapping Machine

- ✓ Work : Crank shaft
- ✓ Machining Detail : Lapping for journals and pins
- ✓ Cycle Time : 39 sec.
- ✓ Weight : 11 tons

Equipment Image



Micro-finishing Solutions for Automotive Parts

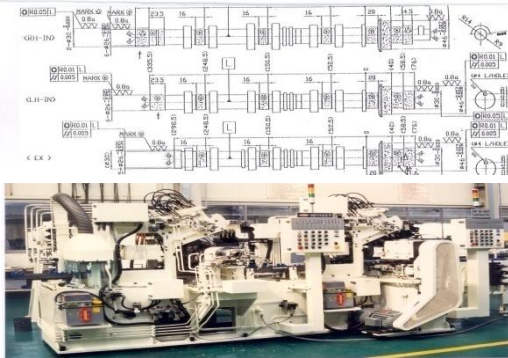
- Cam Lapping Machine

Cam Lapping Machine

Cam Lapping Machine

- ✓ Work : Cam shaft
- ✓ Machining Detail : Lapping for journals and oil seal
- ✓ Cycle Time : 60 sec.
- ✓ Weight : 8 tons

Equipment Image



Cam Lapping Machine

- ✓ Work : Cam shaft
- ✓ Machining Detail : Lapping for journals and cam lobes
- ✓ Cycle Time : 40 sec.
- ✓ Weight : 11 tons

Equipment Image



Micro-finishing Solutions for Automotive Parts

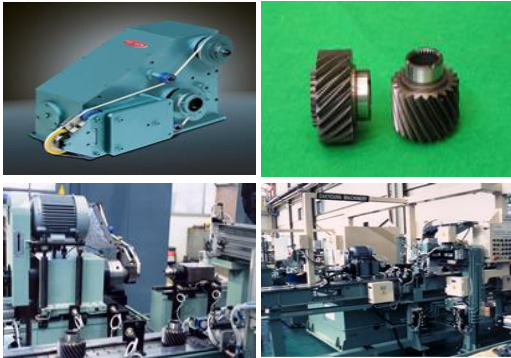
- Lapping Machine / Buffing Machine

Lapping Machine / Buffing Machine

◆ Lapping Machine

- ✓ Work
: Output gear
- ✓ Machining Detail
: Lapping for bearing seat
- ✓ Cycle Time : 23 sec.
- ✓ Weight : 3 tons

Equipment Image



◆ Lapping Machine

- ✓ Work
: Steering rack bar
- ✓ Machining Detail
: Lapping for back side of rack area
- ✓ Cycle Time : 28 sec.
- ✓ Weight : 5 tons

Equipment Image



◆ Buffing Machine

- ✓ Work
: Steering rack bar
- ✓ Machining Detail
: Buffing for outer face
- ✓ Cycle Time : 35 sec.
- ✓ Weight : 3 tons

Equipment Image



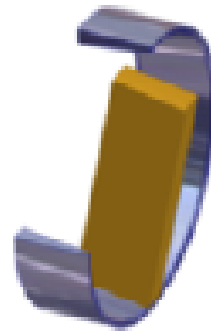
Micro-finishing Solutions for Automotive Parts

- Lapping Machine

Lapping Machine

◆ Lapping Machine (SSF-120A/B)

- ✓ Machining Type: Oscillating
- ✓ Workpiece Mounting: Two shoe + Pressure roller
- ✓ Machining Dia. Range
: 15 – 110 (outer race)
15 – 90 (inner race)
- ✓ Machining Width Range: 6 – 65
- ✓ Loading: Cassette type
- ✓ Oscillating Unit: Air bearing slide
- ✓ Oscillating Stroke: 0.5/1.0/1.5/2.0/2.5
- ✓ Oscillating Speed: 300 – 2000fpm
- ✓ Spindle RPM
: Max. 3300rpm (outer race)
Max. 2200rpm (inner race)
- ✓ Oscillation Drive: 0.4kW 4P AC motor
- ✓ Spindle Drive: 1.5kW 4P AC motor



Equipment Image

