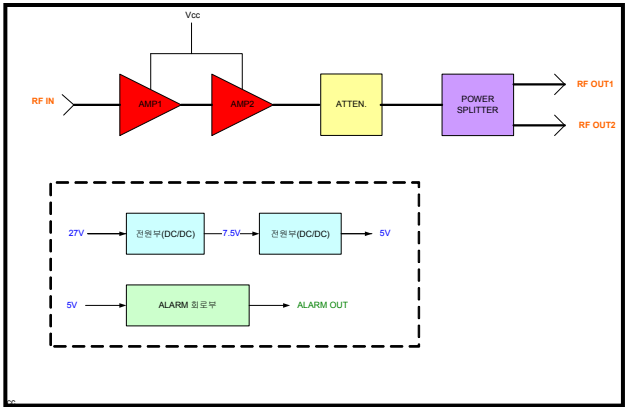
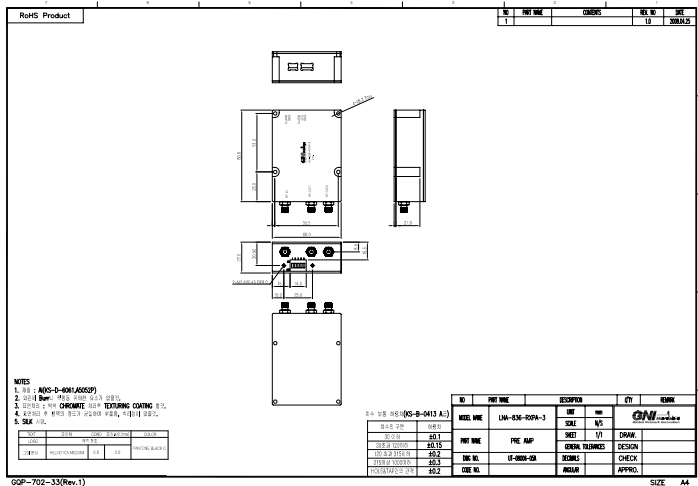
	Item Name	LNA
	Model Name	LNA-836-RXPA-3



### Electrical Specification

Parameters	Specifications	Remarks	
Frequency Range	824 ~ 849MHz	BW : 25MHz	
Gain	15.5 ± 0.5dB	@ 836.5MHz @ room temperature	
Gain Flatness (max.)	± 0.5 P-P dB	@ room temperature	
<sup>(1)</sup> Attenuation	Range	15.5dB	
	Step	0.5dB	
	<sup>(2)</sup> Accuracy (max.)	± (0.25 + 3% of Attenuation Setting Max.) dB	
Noise Figure (max.)	2.0dB (Attenuation 0dB) 5.0dB (Full Attenuation)	@ room temperature	
P1dB (min.)	5.0dBm	@ Maximum Gain	
IMD (min.)	45.0dBc @±885KHz	@ RxA, RxB Output : 0dBm	
	50.0dBc @±1.25MHz		
	55.0dBc @±2.25MHz		
Impedance	50.0 Ω		
In / Out VSWR (max.)	1.3 : 1		
DC Supply Voltage	-48V (-41V ~ -55V)		
Current Rating (max.)	2.0A		
LED 표시	LED ON	Green : Pre-Amp. Normal	Unit Mount Type
	LED ON	Red :Pre-Amp. 불량	
	LED OFF	Power OFF	
<sup>(3)</sup> Alarm	Normal	GND (<300 ohm )	Open Collector Type
	Abnormal	OPEN (>300 ohm)	
Operating Temp.	-30 ~ +70℃		
Storage Temp.	-35 ~ +85℃		

### Mechanical Specification

Dimensions (W× H× D)	mm	80.0 x 60.0 x 27.0
Connector Type R.		SMA(F)