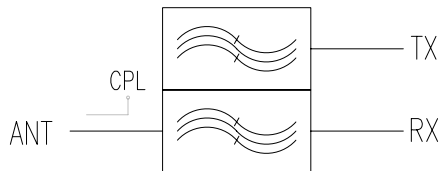
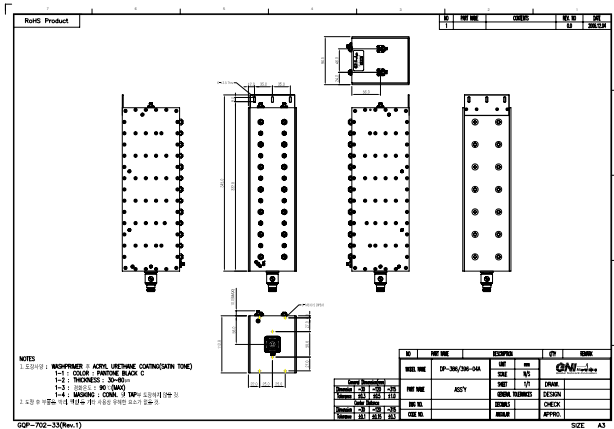
	Item Name	Duplexer
	Model Name	DP-386/396-04A



**Electrical Specification**

Parameter	Specification	
	RX	TX
Frequency Range	384.0 ~388.0 MHz	394.0 ~398.0 MHz
Center Frequency	386.0 MHz	396.0 MHz
Bandwidth	4.0 MHz	
Insertion Loss (Max.)	2.0dB Max.	
Pass Band Ripple (Max.)	0.5 dB Max.	
Return Loss (Min.)	18.0 dB Min.	
Attenuation (Min.)	FC± 7.5	65.0 dBc Min.
	FC± 20.0	70.0 dBc Min.
Isolation (Min.)	TX Band	90.0dBc Min.
	RX Band	90.0dBc Min.
Monitor	Coupling	30.0±1.0dB
	Return Loss	15.0dB Min
Power (Max.)	20.0Watts, Avg	
Impedance	50.0Ω	
Operating Temp.	-30 ~ +75℃	

**Mechanical Specification**

Dimensions (W×H×D)	345.0 × 112.0 X 94.0mm
I/O Port Connectors	N : ANT, SMA(F) : RX TX CPL

## DATA

