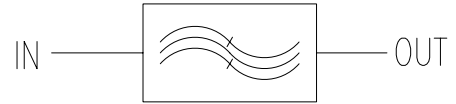
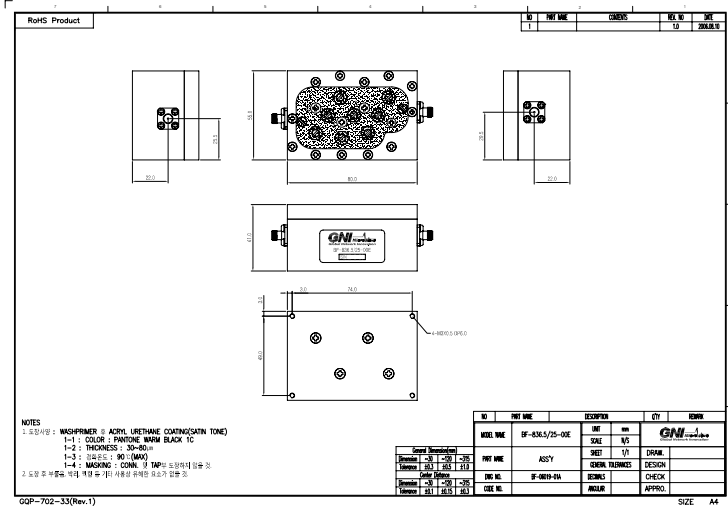


Item Name	2G-RX-BPF
Model Name	BF-836.5/25-00E



Electrical Specification

Parameter		Specification
Frequency Range		824.0~849.0 MHz
Bandwidth		836.5MHz
Insertion Loss (Max.)		0.5 dB
Pass Band Ripple (Max.)		0.3 dB
Return Loss (Min.)		20.0 dB 18.0 dB
Attenuation (Min.)	869.0~894MHz	30.0 dBc
Impedance		50.0 ± 5.0Ω
Operating Temp.		-20.0~70.0

Mechanical Specification

Dimensions (W×H×D)	80.0X55.0X41.0(mm)
I/O Port Connectors	SMA 4-Hole Female

DATA

