



IPEC Mold Parts Catalog

Contact us:

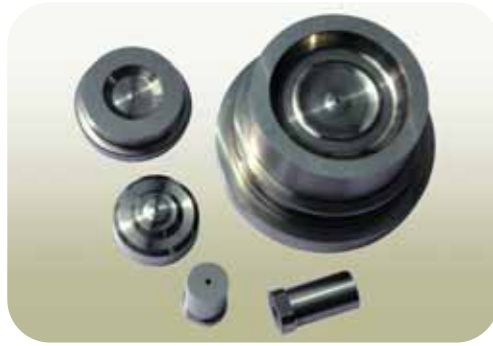
#408 – 720 Bathurst Street
Toronto, Ontario, Canada, M5S 2R4
Email: info@lprglobal.com
T: 1-905-370-0410
[LPR Global, Inc.](#) | [US Korea Hotlink](#)



Mold Parts

1. CUSTOM - MADE PARTS

- MOLD CORE



GATE CORE

Materials : SKD61, SKH-9

Characteristics

N/A

Shipment : within 3 DAYS



SCREW CORE

Materials : SKD-11, SKD61

Characteristics

- keeps outside & inside diameter concentricity precision
- matches gear location

Shipment : within 1 WEEK

- VARIOUS BLOCKS



GUIDE RAIL

Materials : KP-4

Characteristics

accuracy for parallelism & squareness within +/- 0.005mm

Shipment : within 3 DAYS



SLIDE BLOCK

Materials : KP-4

Characteristics

accuracy for parallelism & squareness within +/- 0.005mm

Shipment : within 3 DAYS



SQUARE CORE

Materials : N/A

Characteristics

accuracy of location and dimensional tolerance within -0.01

Shipment : within 1 WEEK



INJECTOR CORE



INNER BLOCK

Materials : KP-4

Shipment : within 3 DAYS



TAPER CORE

Materials : KP-4

Shipment : within 3 DAYS

- CORE PINS



Materials : SKD-61, SKH-9, SCM (H13, M2, P20)

Characteristics

keeps tolerance accuracy and illumination glossy

Shipment : within 2 DAYS

- ELECTRODES



GATE ELECTRODE

Materials : Copper (Cu)

Shipment : within 2 DAYS



COMMON ELECTRODE

Materials : Copper (Cu)

Shipment : within 2 DAYS

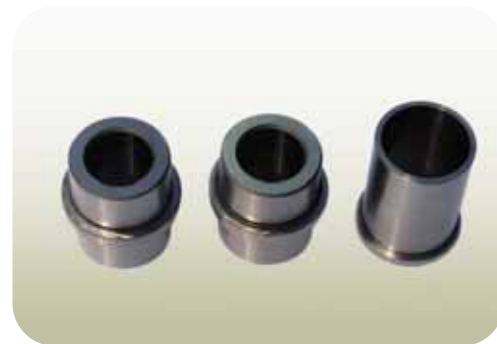


SCREW ELECTRODE

Materials : Copper (Cu)

Shipment : within 2 DAYS

- GUIDE BUSHES & PINS



GUIDE BUSH

Materials : SKD-11, SKH-61 (D2, H13)

Characteristics

- accuracy for inside / outside diameter within (+/-0.005)
- accuracy for inside diameter tolerance within +0.01 parallelism & squareness within +/- 0.005mm

Shipment : within 4 DAYS



NC ELECTRODE

Materials : Copper (Cu)

Shipment : within 3 DAYS



GUIDE PIN

Materials : SUJ2, SKD-61 (420, H13)

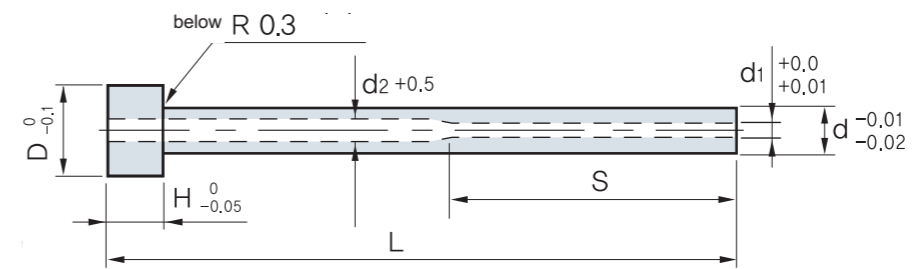
Characteristics

accuracy for outside diameter within (+/- 0.01)

Shipment : within 3 DAYS

2. STANDARD PARTS

- SLEEVE PINS

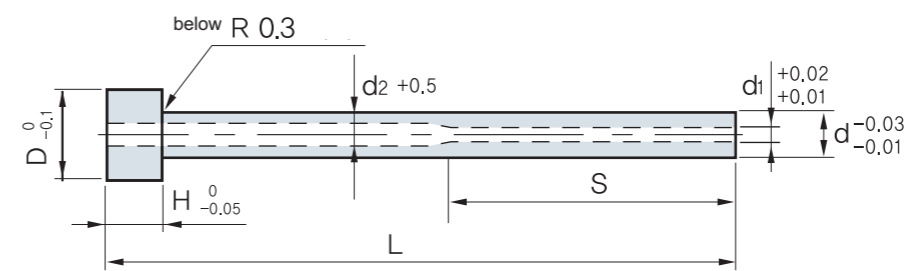


① SKH-51 (HSS)

Materials : SKH-51

Hardness : HRC 58 ~ 60

Tolerance : +0.00 ~ -0.005

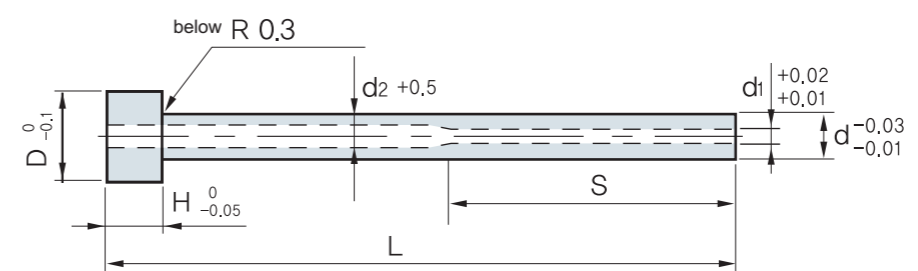


② SKD-61 (DH2F)

Materials : SKD-61

Hardness : Surface HRC 58 ~ 60
Internal HRC 35 ~ 40

Tolerance : φ 10 (-0.01 ~ -0.02)
Above φ 11 (-0.01 ~)



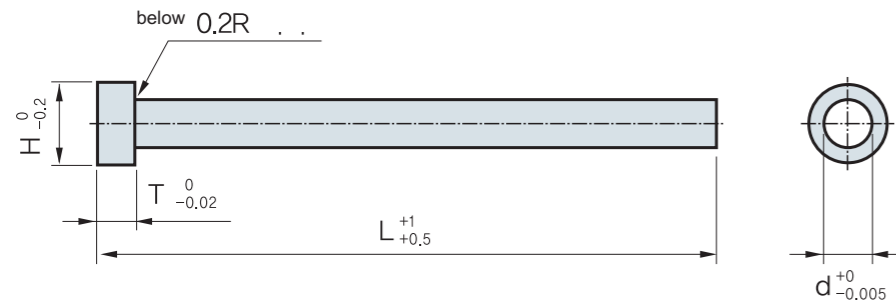
③ SACM 645

Materials : SACM 645

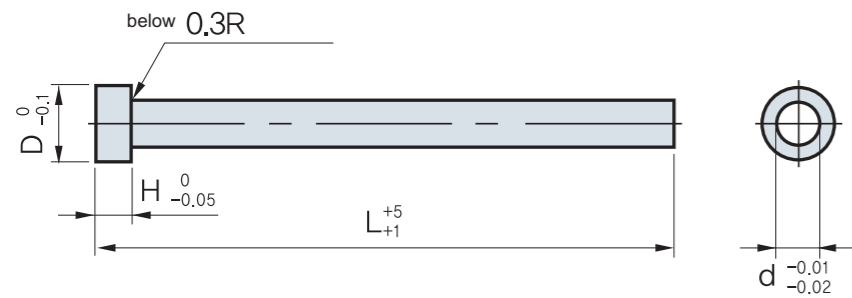
Hardness : Surface HRC 58 ~ 60
Internal HRC 32 ~ 36

Tolerance : φ 10 (-0.01 ~ -0.02)
Above φ 11 (-0.01 ~ -0.03)

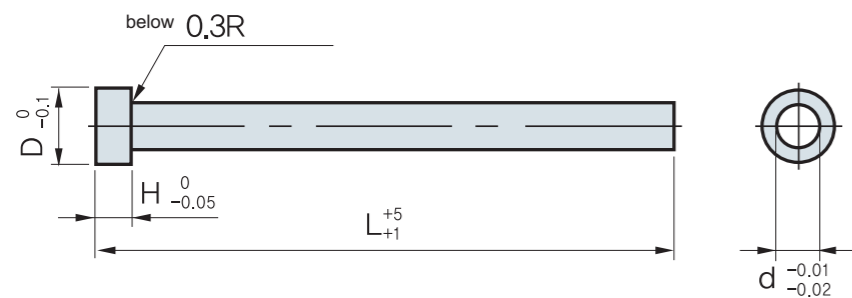
- EJECTOR PINS



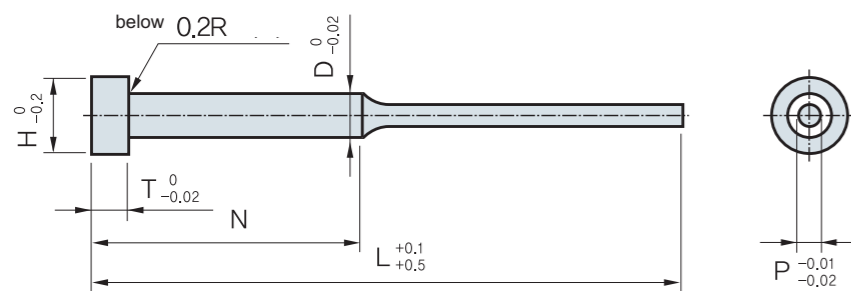
1 SKH-51 (HSS)
Materials : SKH-51
Hardness : HRC 58-60
Tolerance : +0.00 ~ -0.005



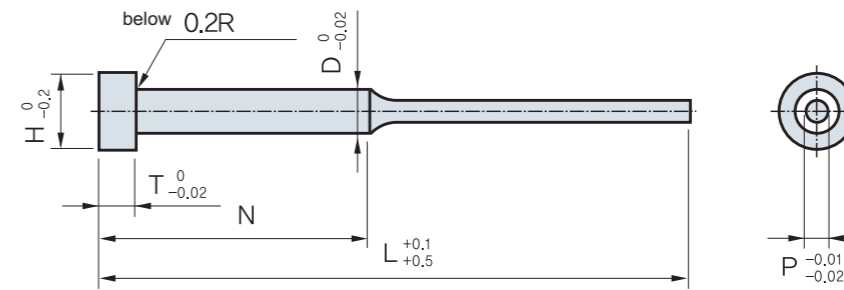
2 SKD-61 (DH2F)
Materials : SKD-61
Hardness : Surface HRC 58 ~ 60
 Internal HRC 40 ~ 45
Tolerance : -0.01 ~ -0.02
 ϕ 10 (-0.01~-0.02)
 Above ϕ 11(-0.01~-0.03)



3 SACM 645
Materials : SACM 645
Hardness : Surface HRC 58 ~ 60
 Internal HRC 32 ~ 35
Tolerance : ϕ 10 (-0.01 ~ -0.02)
 Above ϕ 11 (-0.01 ~ -0.03)

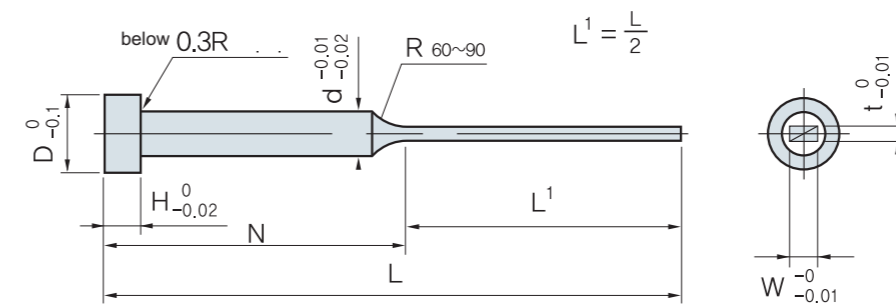


4 HSS 2 STEPPED EJECTOR PINS
Materials : SKH-51
Hardness : HRC 58 ~ 60
Tolerance : +0.00 ~ -0.005



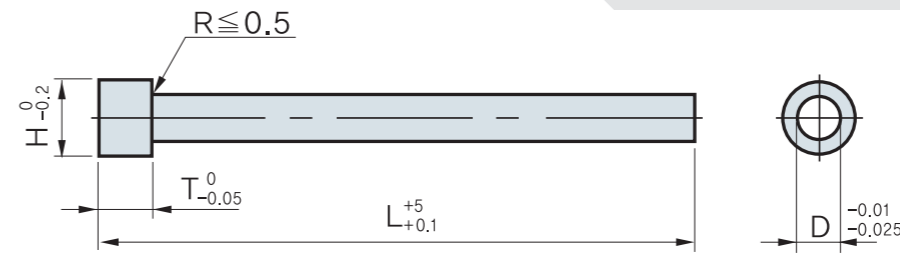
5 SKD-11 (Custom - Made Only)

- SQUARE EJECTOR PIN



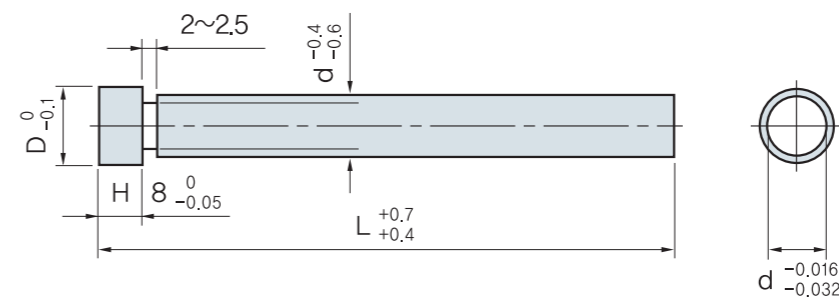
Materials : SKH-51
Hardness : HRC 58-60
Tolerance : +0 ~ -0.01

- HEAT CONDUCTION PIN



Materials : Be-Cu
Hardness : HRB 95

- RETURN PIN



Materials : S45C
Hardness : HRC 55 ~ 58
Tolerance : -0.02 ~ -0.04

※ Products with special specification can be made-to-order